

J95 SERIES

FEATURES

- Latching Relay
- 1PDT,IPST
- Small SIZE,PC Board
- Plastic type,solder type
- Dimension:19.5× 15.4×15mm



ORDERING INFORMATION

J95
A
—
S
12

1
2
3
4

1. Type
2. Contact Arrangement
Nil: 1 Form C
A : 1 Form A
3. S:One Coil(0.36W)
D:Twin Coil(0.45W)
- 4.Coil Nominal Voltage

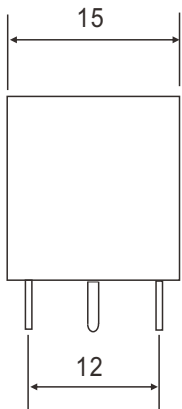
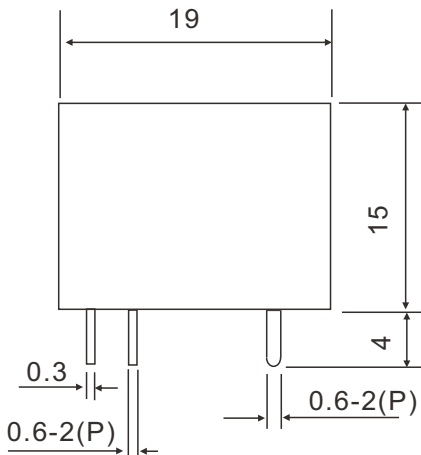
CONTACT RATING

1 FORM A	AC 250V / 10 A	DC 28V / 10 A
1 FORM C	AC 250V / 10 A	DC 28V / 10 A

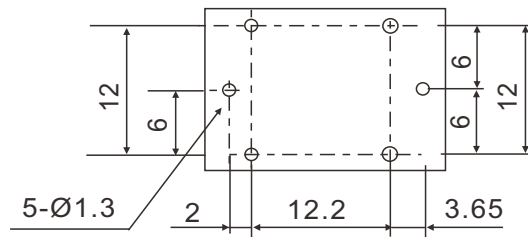
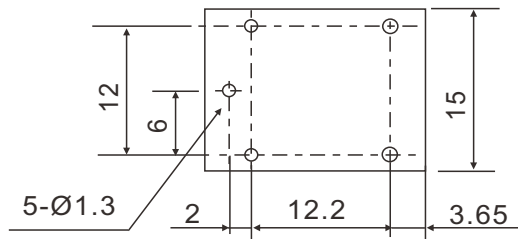
COIL DATA(0.36W,0.45W at 25°C)

Coil Nominal Voltage (VDC)	Resistance Tol.±10% (Ohms)		Maximum Pick Up Voltage (V)	Minimum Drop Out Voltage (V)
	0.36W	0.45W		
5	70	55	3.8	0.5
6	100	80	4.5	0.6
9	225	180	6.8	0.9
12	400	320	9.0	1.2
18	900	720	13.5	1.8
24	1600	1280	18	2.4

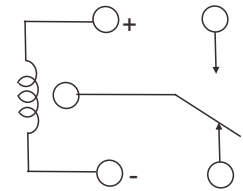
DIMENSIONS(±0.2mm)



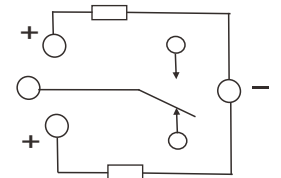
P.C.B LAYOUT (BOTTOM VIEW)



WIRING DIAGRAW



One Coil



Twin Coil

GENERAL DATA

Insulation Resistance	1,00 MΩ Min. (DC 500V)
Dielectric Strength	750 VAC, 50/60Hz between contact.
	1,500 VAC, 50/60Hz between all elements.
Contact Material	Ag Alloy
Contact Resistance	100 milliohms max. (initial value)
Shock Resistance	Malfunction: 10G(100m/s) ; Destructive: 100G(1000ms)
Vibration Resistance	Destructive: 10 to 55 Hz. at Double Amplitude of 1.5 mm
Operation Time	10 ms max.
Release Time	5 ms max.
Temperature Range	- 40°C ~ + 85°C
Expected Life	With operation rate 30/min.
	Mechanical - 10,000,000 operations min. Electrical - 100,000 operations min. at rated load.
Weight	10 grams



RAYEX ELEC.

Latching Relay

J96 SERIES

FEATURES

- Latching Relay
- 1PDT,2PDT
- Plastic type,solder type
- Dimension:28.9× 12.6×20.6mm



ORDERING INFORMATION

J96 1H **S 12**

1 2 3 4 5

- | | |
|----------------------|-------------------------|
| 1.Type | 3. Contact Arrangement |
| 2.Cont.Type | Nil: Form C |
| 1:1 Pole (10A) | A: Form A |
| 2:2 Pole (5A) | B: Form B |
| 1H:1Pole 2 Feet(16A) | 4. S:One Coil (0.54W) |
| | D:Twin Coil (0.72W) |
| | 5. Coil Nominal Voltage |

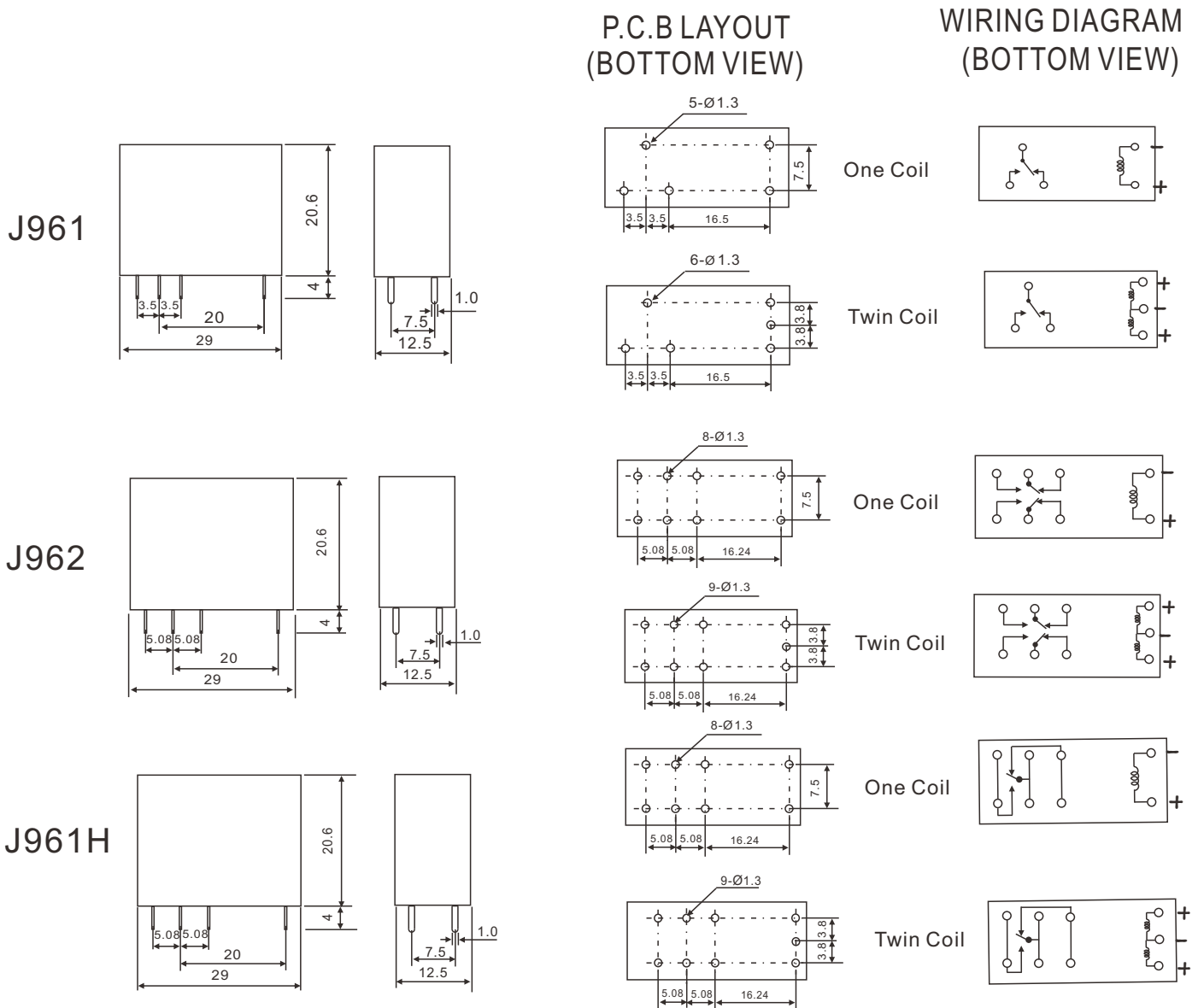
CONTACT RATING

J961 TYPE (1PDT)	Resistive (Cos.θ = 1)	AC 250V / DC 28V	10A
J962 TYPE (2PDT)	Resistive (Cos.θ = 1)	AC 250V / DC 28V	5A
J961H TYPE (1PDT)	Resistive (Cos.θ = 1)	AC 250V / DC 28V	16A

COIL DATA(0.54W,0.72W at 25°C)

Coil Nominal Voltage (VDC)	Resistance Tol.±10% (Ohms)		Maximum Pick Up Voltage (V)	Minimum Drop Out Voltage (V)
	0.54W	0.72W		
5	47	36	3.8	0.5
6	68	50	4.5	0.6
9	155	115	6.8	0.9
12	270	200	9.0	1.2
18	450	610	13.5	1.8
24	800	1100	18	2.4

DIMENSIONS(±0.2mm)



GENERAL DATA

Insulation Resistance	1,00 MΩ Min. (DC 500V)
Dielectric Strength	750 VAC, 50/60Hz between contact.
	1,500 VAC, 50/60Hz between all elements.
Contact Material	Ag Alloy
Contact Resistance	100 milliohms max. (initial value)
Shock Resistance	Malfunction: 10G(100m/s) ; Destructive: 100G(1000ms)
Vibration Resistance	Destructive: 10 to 55 Hz. at Double Amplitude of 1.5 mm
Operation Time	10 ms max.
Release Time	5 ms max.
Temperature Range	- 40°C ~ + 85°C
Expected Life	With operation rate 30/min.
	Mechanical - 10,000,000 operations min. Electrical - 100,000 operations min. at rated load.
Weight	15 grams