

产品概述 /product Overview

EV熔断器是专门针对车用系统保护用熔断器，Ev熔断器是兼具过载和短路保护要求的全范围；

EV熔断器的特点：熔断器，但其熔断特性又不同于传统的g类熔断器。旨在保护敏感的电动和混合动力汽车设备，包括高压大容量电池、电力设备、接触器、电缆以及其他辅助电路，从而增强电气系统安全性。EV熔断器能够为低至1.6In的额定电流提供保护，适用于各种过流保护情况，可以避免由循环疲劳造成的滋扰运行，能够为故障电流较大、容量较大、更加高效的车辆电池提供保护，可以满足车用抗振、抗冲击、安装、耐高温、耐湿热等特殊需求。

本系列熔断体适用于电动汽车中作为车载蓄电池、车载线路系统中以及逆变器的综合保护，额定分断能力至50KA.该系列产品符合JASO D622和ISO 8820、以及GB31465的规定.在满足上述要求的同时还应对熔断器电流值进行一定的修正，其可允许的最大连续负载电流可以采用以下公式计算：

$$I_b = I_n \cdot k_t \cdot k_e \cdot k_v \cdot k_f \cdot k_b$$

I_b:可允许的最大连续负载电流

I_n:熔断器的额定电流

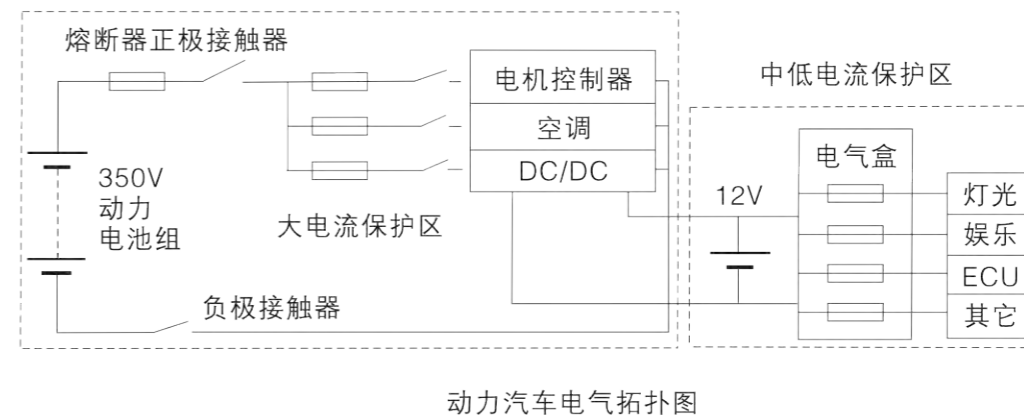
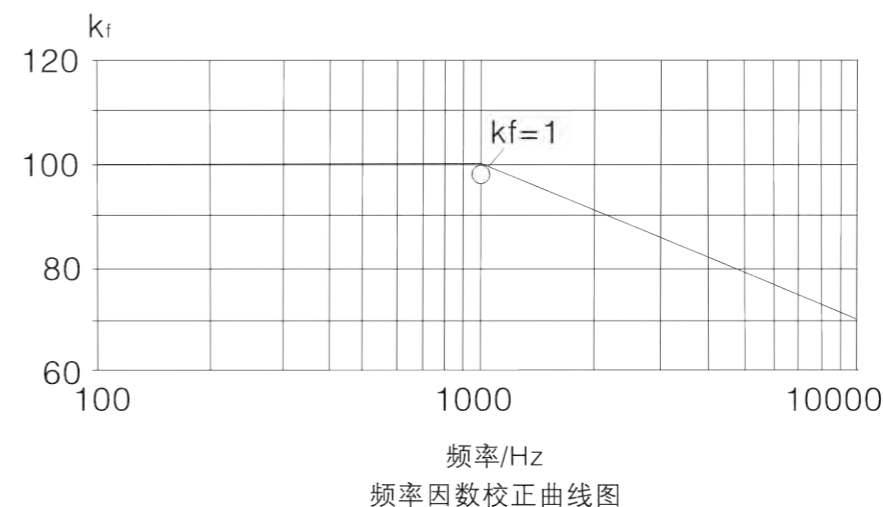
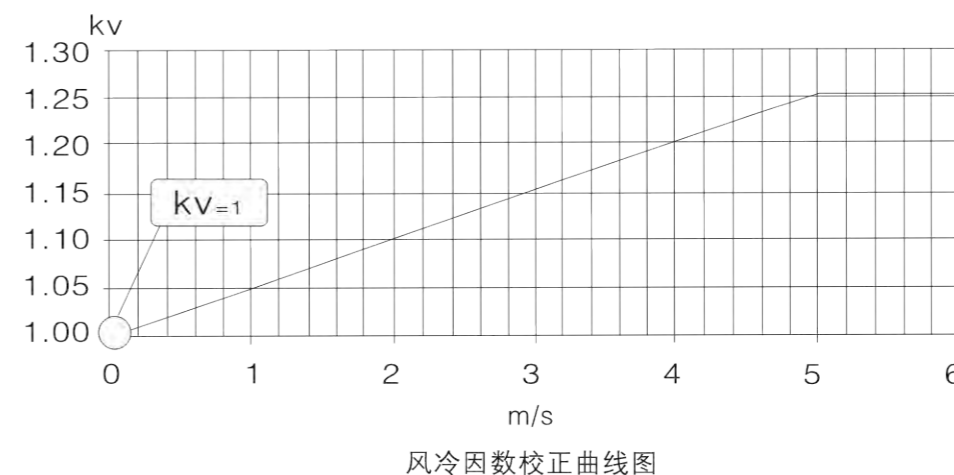
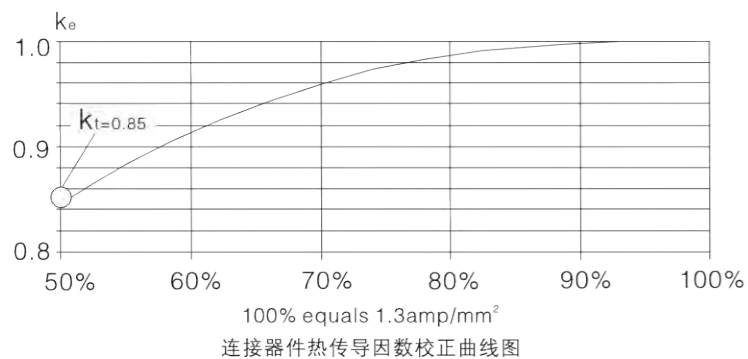
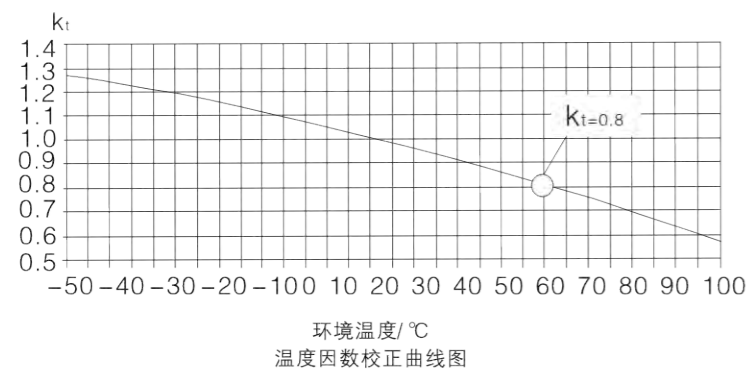
EV Fuse is specially designed for the protection of vehicle system ,EV fuse is a full range over both overload and short circuit protection requirements. EV fuse features:it is fuse ,but is different from the traditional g type fuse,designed to protect sensitive electric and hybrid vehicle equipment, including high-voltage high-capacity batteries, power equipment, contactors, cables, and other ancillary circuits,thus to enhance the safety of electrical systems.EV fuse is able to provide as low as 1.6 I_n rated current of the protection, suitable for all kinds of over-current protection, can avoid the nuisance caused by cycle fatigue run. it is able to protect large fault current , large capacity, more efficient vehicles battery .it can meet the vehicle seismic, impact resistant, installation, special requirements, such as resistance to high temperature, damp and hot.This series of fuses is suitable for the comprehensive protection of battery, circuit system and inverter in electric vehicles.The rated breaking capacity can be 50KA.

This series of products meet the requirements of JASO D622 and ISO8820, and GB31465.While meeting the above requirements, the current value of the fuse should also be modified to some extent. The maximum continuous load current allowed by the fuse can be calculated by the following formula:

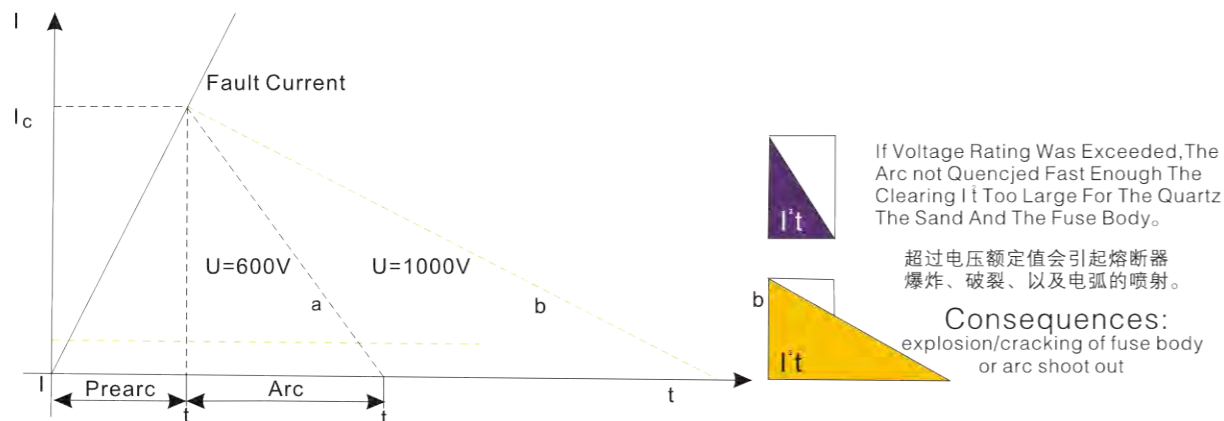
$$I_b = I_n \cdot k_t \cdot k_e \cdot k_v \cdot k_f \cdot k_b$$

I_b:Maximum allowable continuous load current

I_n:Rated current of the fuse



电压因素 Voltage Factor
Voltage Rating ≥ Maximum Continuous System Voltage
额定电压 ≥ 系统最大的可持续电压

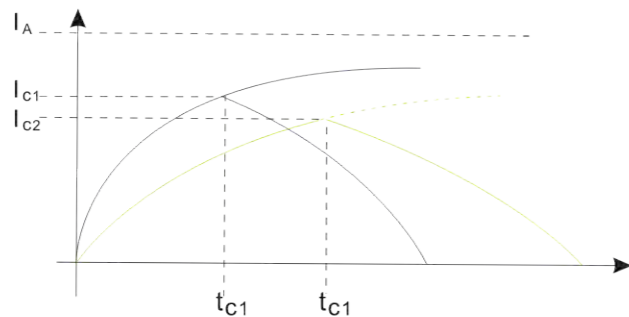


- CFB1 70A-600A 150V DC
- CFB2 35A-800A 500V DC
- CFB3 35A-600A 700V DC

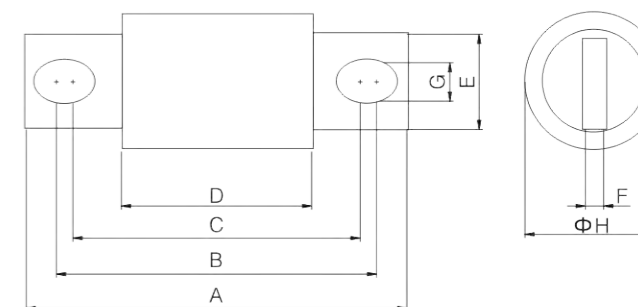
- 使用类别 /Class of Operation: aR
- 标准 /Standard: ISO8820-1 ISO8820-8 GB/T31465.1
- 分断能力 /Breaking Capacity: 50kA
- 时间常数 /Time Constant: 1-3ms

时间常数对分断性能的影响
Influence of Time Constant on Fuse operation

- $A = A_L + A_S + A_R$
- 电弧能量
A: Arc energy
 - 电感中能源存储
A_L: Energy stored in the inductance
 - 电力来源
A_S: Energy from power source
 - 消耗电路电阻的能量
A_R: Energy dissipated in circuit resistance

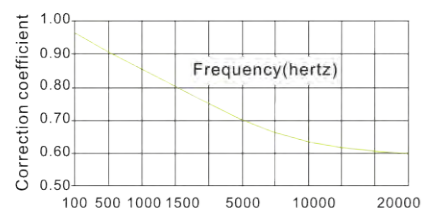
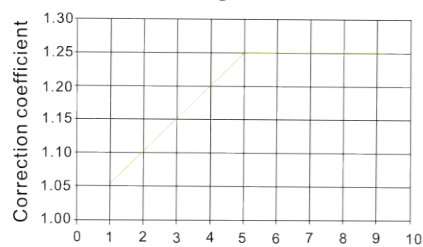


尺寸 /Dimensions -mm

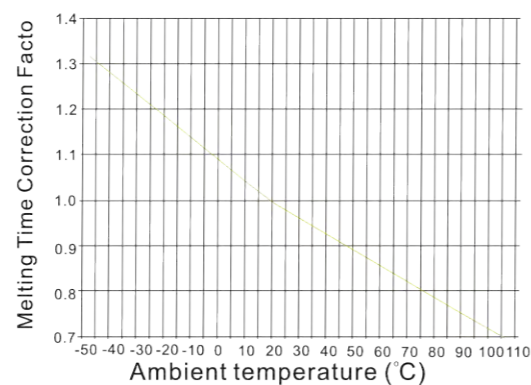


影响选择的因素
Influence the selection factor

Air Cooling 风冷散热修正



温度降额
Temperature derating



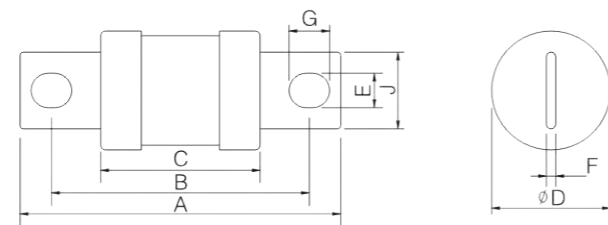
技术参数 /Specifications

产品型号 Model	额定电流(A) Rated current	外形尺寸/尺码(mm) Overall dimension/size							
		A	B	C	D	E	F	G	ΦH
CFB1-01	70A-350A	70	57.5	45	30	19	4	8.5	25
CFB1-02	400A-600A	88	69.5	50	31	25	6	10.5	38
CFB2-01	35A-100A	92	77	66	52	19	4	8.5	27
CFB2-02	125A-200A	96	81	68	54	24	5	8.5	31
CFB2-03	225A-400A	111	90	74.5	54	25.5	6	10.5	38
CFB2-04	450A-600A	110	90	74.5	54	38	6.4	10.5	51
CFB2-05	700A-800A	161	126	88	54	50	9.6	13.5	64
CFB3-01	35A-60A	109	95	83	71	19	4	8.5	25
CFB3-02	70A-100A	111	95	83	71	24	5	8.5	31
CFB3-03	125A-250A	128	108	89	71	26	6.4	10.5	38
CFB3-04	300A-400A	127	107	91.5	71	38	6.4	10.5	51
CFB3-05	450A-600A	178	143	105	71	50	10	13.5	64

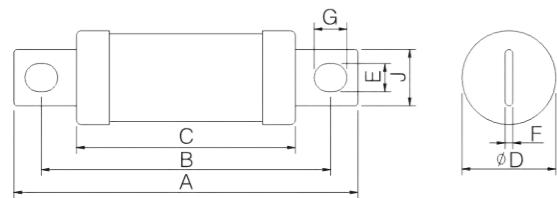
CFG1 35A-800A 500V DC
CFG2 35A-600A 800V DC
CFG3 35A-600A 1000V DC

- 使用类别 /Class of Operation: aR
- 标准/Standard: ISO8820-1 ISO8820-8 GB/T31465.1
- 分断能力/Breaking Capacity: 50kA
- 时间常数/Time Constant: 1-3ms

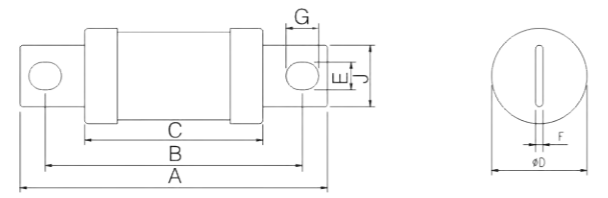
尺寸/Dimensions-mm



CFG1 500V DC 35A-800A



CFG2 800V DC 35A-600A



CFG3 1000V DC 35A-600A

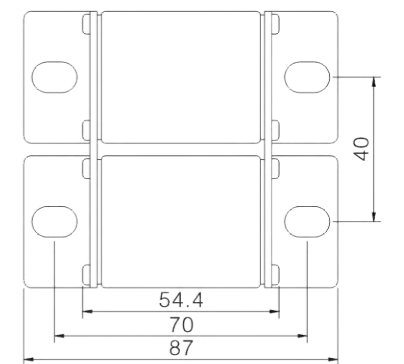
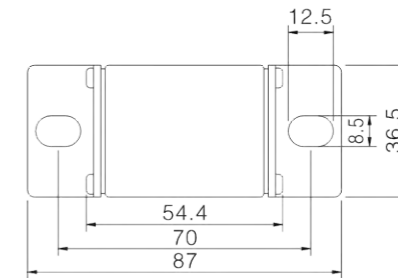
技术参数 /Specifications

产品型号 Model	额定电流(A) Rated current	外形尺寸/尺码(mm) Overall dimension/size							
		A	B	C	D	E	F	G	J
CFG1-11	35A-200A	92	72	51	26	8	3	13	19
CFG1-12	225A-400A	97	75	51	31	8	4	13	24
CFG1-13	450A-600A	110	81	51	38	10	6	17	27
CFG1-14	650A-800A	110	81	51	51	10	6	17	40
CFG2-21	35A-90A	110	91	70	26	8	3	13	19
CFG2-22	100A-400A	115	95	70	31	8	4	13	24
CFG2-23	450A-600A	129	99	70	51	10	6	17	40
CFG3-31	35A-100A	110	91	72	26	8	3	13	19
CFG3-32	125A-200A	115	95	72	31	8	4	13	24
CFG3-33	225A-400A	129	99	72	38	10	6	17	27
CFG3-34	450A-600A	129	99	72	51	10	6	17	40

CFL00 35A-600A 800V DC

- 使用类别 /Class of Operation: aR
- 标准/Standard: ISO8820-1 ISO8820-8 GB/T31465.1
- 分断能力/Breaking Capacity: 50kA
- 时间常数/Time Constant: 1-3ms

尺寸/Dimensions-mm



技术参数 /Specifications

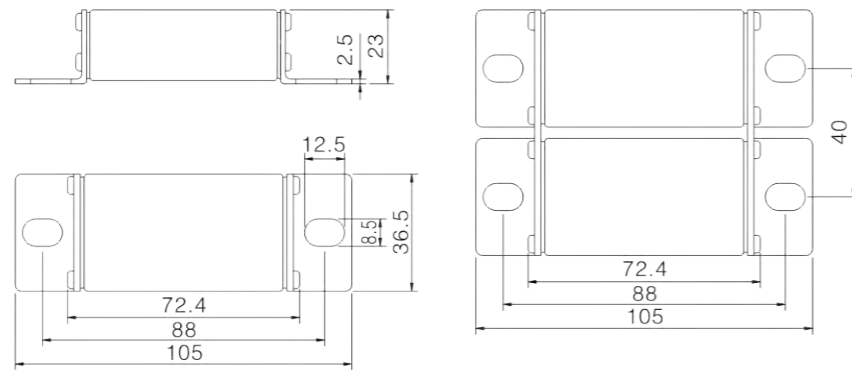
产品型号 Model	额定电流(A) Rated current	焦耳积分 I ² T (A ² S)	
		Pre-arcing	Total
CFL-00	100	1250	3950
CFL-00	125	2300	6770
CFL-00	150	3300	9620
CFL-00	175	4320	13940
CFL-00	200	5500	16950
CFL-00	225	7200	21640
CFL-00	250	9250	26990
CFL-00	300	12800	38250
CFL-00	350	18100	52730
CFL-00	400	22750	68640
CFL-00x2	350	18150	52730
CFL-00x2	400	22730	68640
CFL-00x2	450	32170	109250
CFL-00x2	500	45310	188000
CFL-00x2	600	49220	215110

CFL-00 35A-400A 1000V DC

快速熔断器
Fast Fuse

- 使用类别/Class of Operation: aR
- 标准/Standard: ISO8820-1 ISO8820-8 GB/T31465.1
- 分断能力/Breaking Capacity: 30kA
- 时间常数/Time Constant: 1-3ms

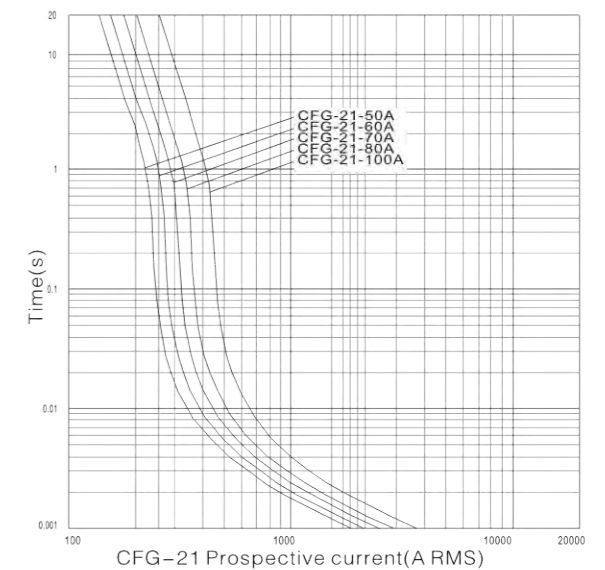
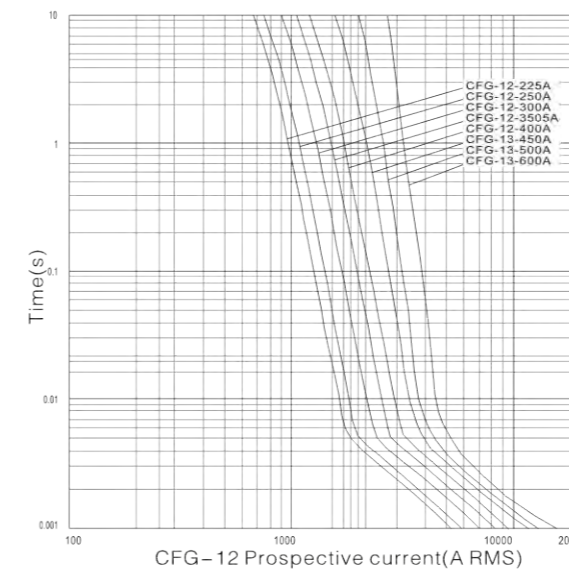
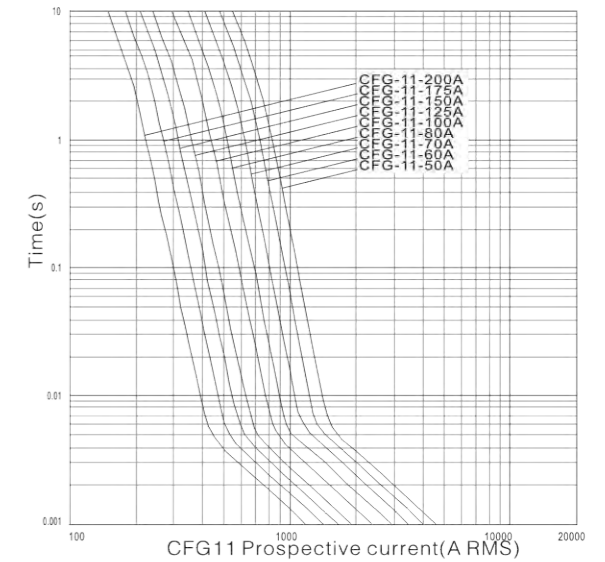
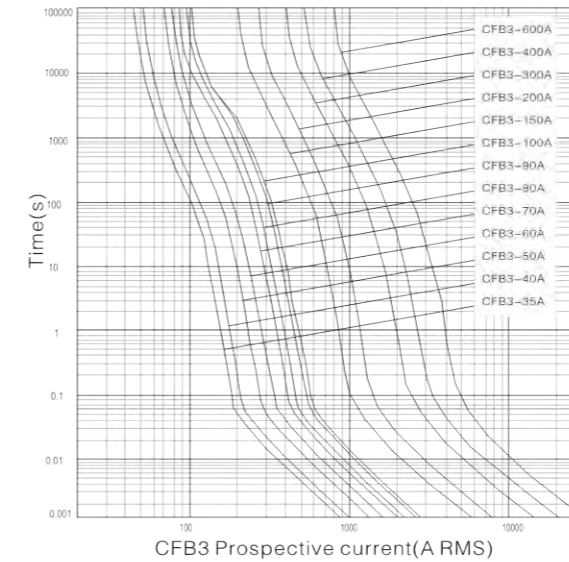
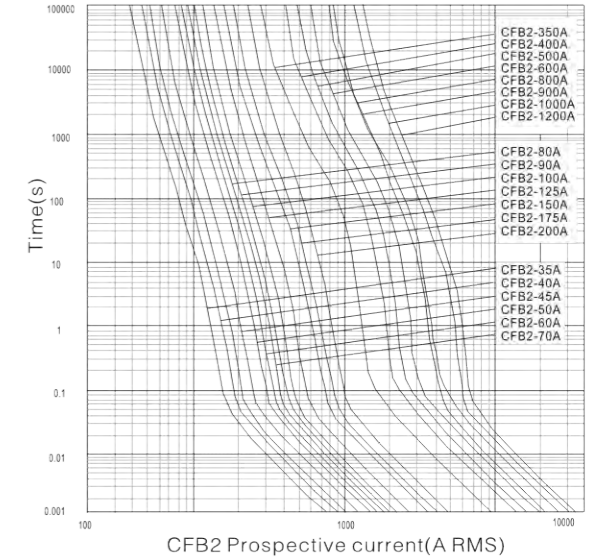
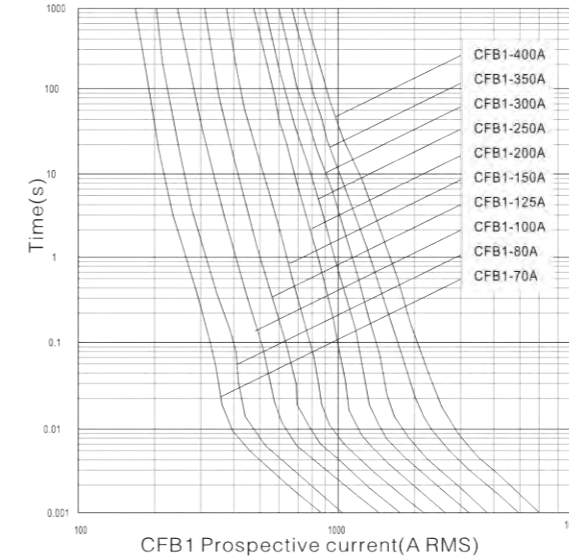
尺寸/Dimensions-mm



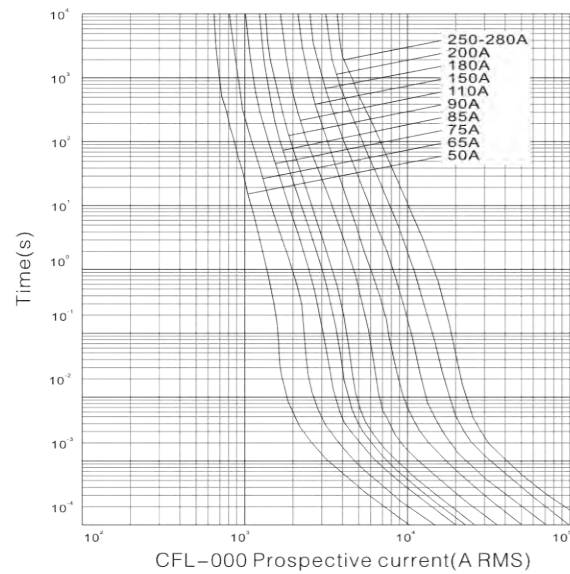
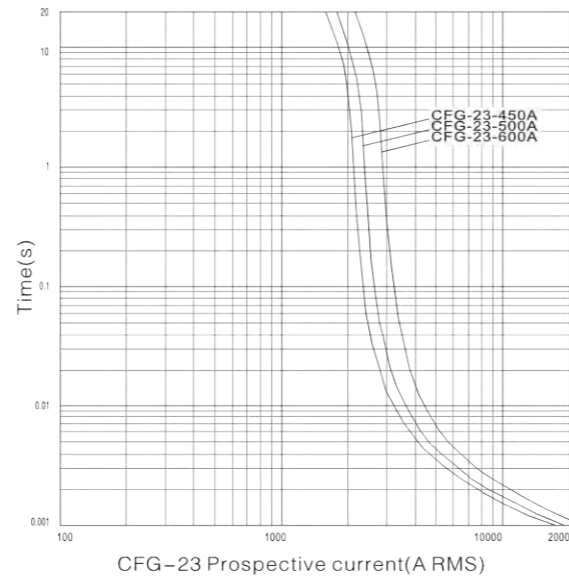
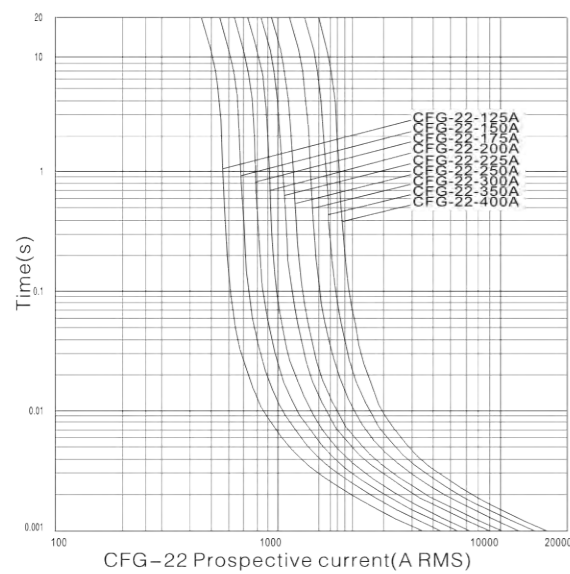
技术参数 / Specifications

产品型号 Model	额定电流(A) Rated current	焦耳积分 I ² T (A ² S)	
		Pre-arcing	Total
CFL-00	35	131	385
CFL-00	50	318	931
CFL-00	60	469	1331
CFL-00	70	612	1837
CFL-00	80	791	2429
CFL-00	100	1236	3786
CFL-00	125	2081	6496
CFL-00	150	3026	9332
CFL-00	175	4032	13774
CFL-00	200	5300	16745
CFL-00x2	225	6913	21454
CFL-00x2	250	8941	26889
CFL-00x2	300	12613	38065
CFL-00x2	350	17894	52531
CFL-00x2	400	22546	68454

Time current Curve/曲线图



Time current Curve/曲线图



RQ1 60A-800A 48V dc/ 125V ac
FT2 35A-750A 48V dc/ 125V ac

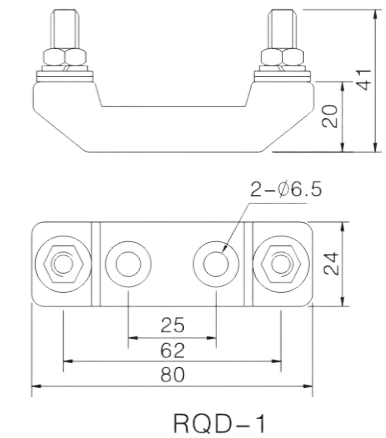
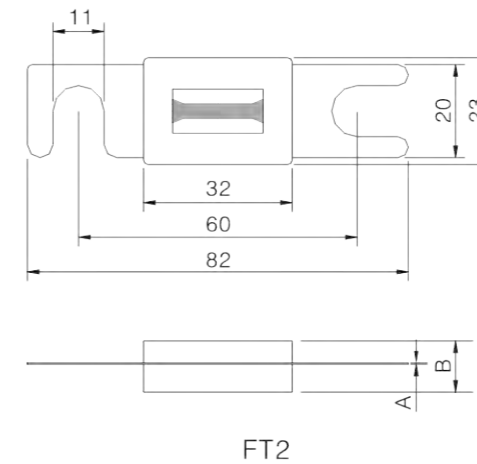
汽车熔断器
Automobile Fuse

使用类别 /Class of Operation: aR

标准/Standard: GB/T31465 ISO8820

型号	电流	A	B
FT2	35A-250A	0.3~1.1	10.2
FT2	275A-500A	0.5~1.0	10.2
FT2	600A-750A	0.65~0.9	12
RQ1	60A-800A	0.6~1.8	9

尺寸/Dimensions-mm



技术参数 /Specifications

产品型号 Model	额定电压 Rated Voltage(V)	额定电流(A) Rated current	外形尺寸/尺码(mm) Overall dimension/size							
			A	B	C	ΦD	ΦE	L	H	I
EVB-1	150V DC	70A-350A	82	51	20	5.5	9	25	57	15
EVB-2	700V DC	35A-100A	115	92	20	5.5	9	25	57	15
EVB-3	700V DC	125A-200A	130	99	25	5.5	12.5	38	77	20
EVB-4	700V DC	225A-400A	130	100	30	10.5	20	51	77	20
EVB-5	700V DC	450A-600A	180	126	30	10.5	20	63	92	20

